

# community health facts 2013

## Gulf Islands

### Demographics

The Gulf Islands Local Health Area (which encompasses Salt Spring, Galiano, Mayne, Pender and Saturna Islands) is home to approximately 16,500 people.

- 2.4% identify as Aboriginal.
- 12% are aged 75 and over.
- The population is expected to grow by 27% over the next 20 years.
- The population over age 75 is expected to more than double by 2033.

### Health and Wellbeing

Compared to Island Health as a whole, the Gulf Islands have (based on most recent data available):

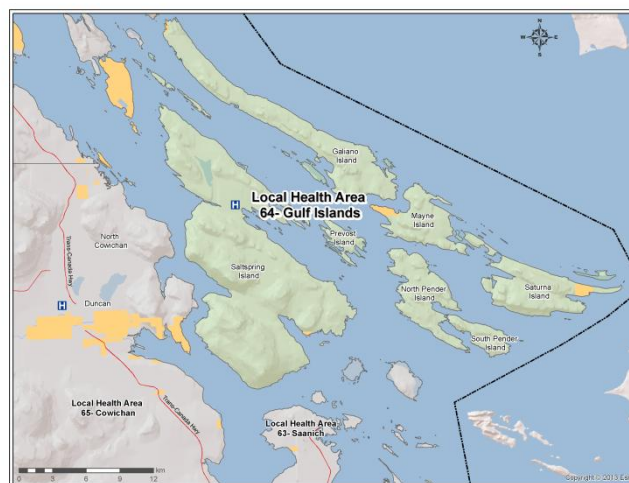
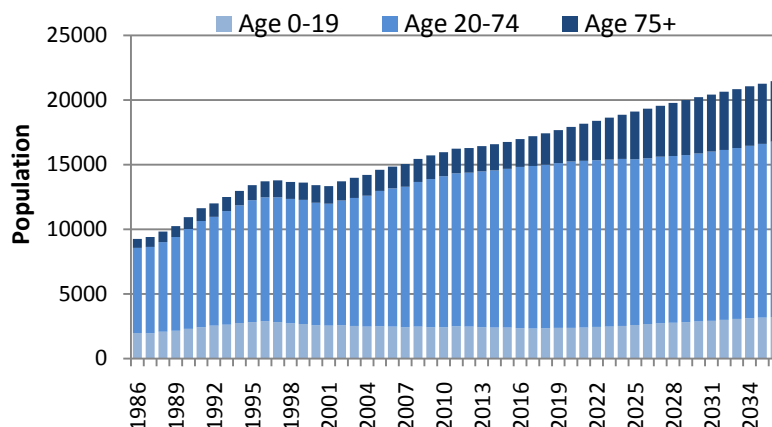
- A lower birth rate.
- A higher rate of maternal smoking.
- Lower rates of preterm births and low birth weight.
- A higher life expectancy (84 years).
- A lower rate of death due to diabetes, falls, and chronic lung disease.
- Lower prevalence of leading chronic conditions such as depression/anxiety, hypertension and asthma, but higher prevalence of osteoarthritis.

### Social Determinants of Health

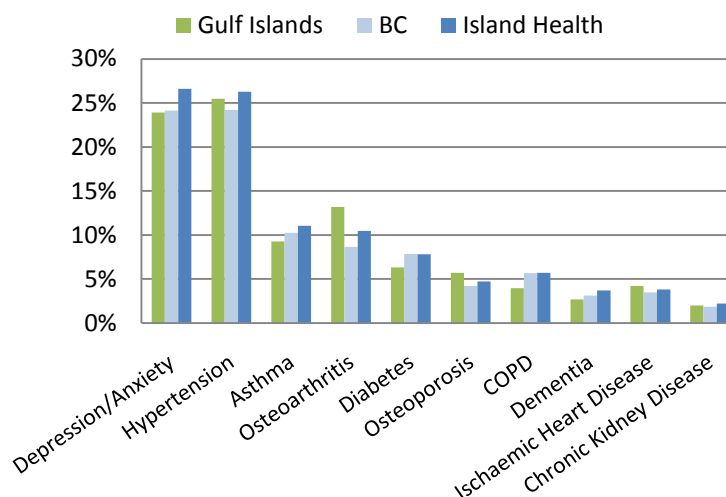
Housing, employment, education and social support can have a big impact on the health of our communities and our ability to make healthy lifestyle choices. Compared to Island Health overall (based on most recent data available):

- *Economic Wellbeing* – The Gulf Islands have a lower percent of the population who are unemployed, receiving income assistance or employment insurance, and a lower percent of low income seniors.
- *Education* – The Gulf Islands have a lower percent of students in grades 4 and 7 scoring above the standard levels on reading and writing tests, but a higher percent of 18 year olds graduating high school.

Gulf Islands Population Growth



Prevalence of Chronic Conditions, 2010/11



### Social Determinants of Health *(continued)*

- **Housing** – The Gulf Islands have higher rates of homeowners and renters spending more than 30% of income on housing costs.
- **Child Health** – The Gulf Islands have a higher rate of children hospitalized due to injury and poisoning and a lower rate of children hospitalized due to respiratory disease
- **Crime** – The Gulf Islands have lower crime rates, including motor vehicle theft, serious crime, and non-cannabis drug offences, but higher rates of illicit drug deaths.

### Health Services

The Gulf Islands are served by Lady Minto / Gulf Islands Hospital, the Salt Spring Island Health Unit, the Galiano Island Health Care Centre, the Pender Islands Health Centre, the Mayne Island Health Care Centre and the Saturna Island Health Centre.

The area has 81 residential care beds, and 67 assisted living beds spread over four sites, including Lady Minto Hospital. Additional services available include public health, home and community care, and community mental health and substance use.

Every year, Gulf Islands residents have about 3,000 hospital admissions, and 7,500 unscheduled emergency department visits.

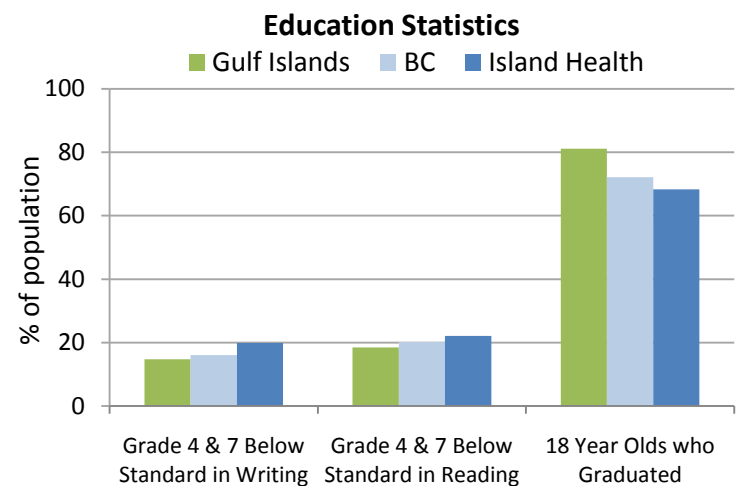
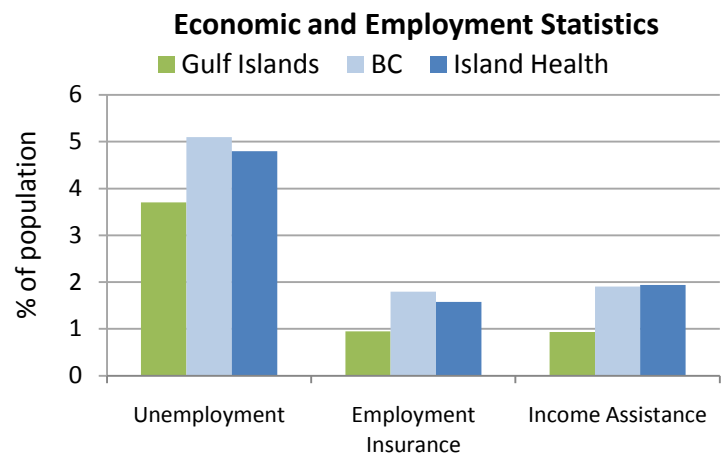
Of the 3,000 admissions in 2011/12:

- 32% were to Lady Minto Hospital
- 21% were to the Royal Jubilee Hospital
- 14% were to Victoria General Hospital
- 11% were to the nearby Saanich Peninsula Hospital
- 22% were to other hospitals

Of the 7,500 unscheduled emergency visits in 2012/13:

- 86% were to Lady Minto/Gulf Islands Hospital
- 42% were for those age 60 and over

For more information on Island Health Services in your region, please visit: <http://www.viha.ca/locations/>



### Gulf Islands Resident Cases by Hospital

